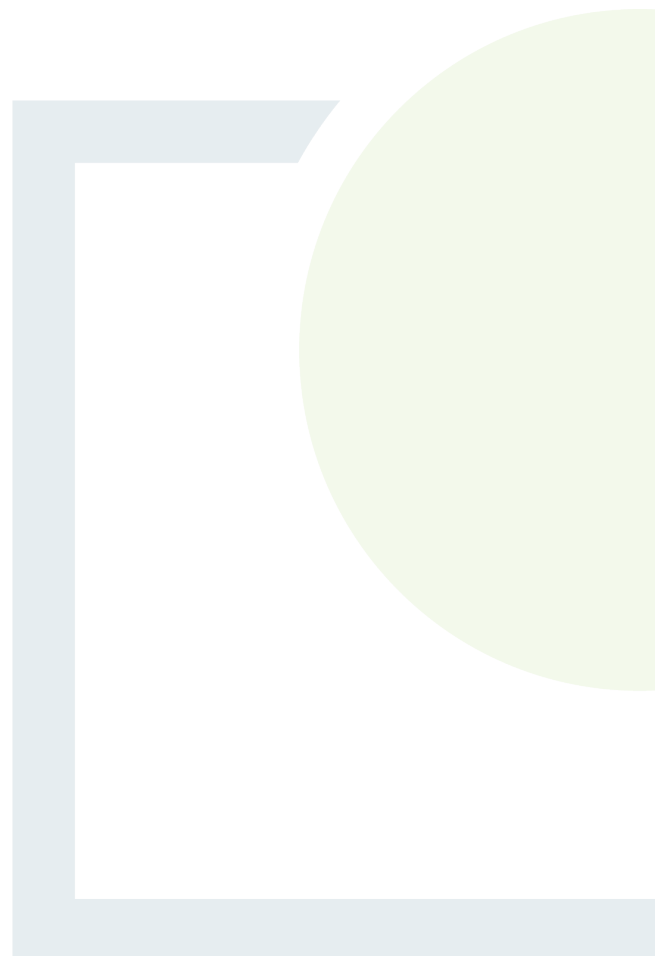




DESIGNING AND DELIVERING
A SUSTAINABLE FUTURE

APPENDIX 13.1

Cultural Heritage Figures



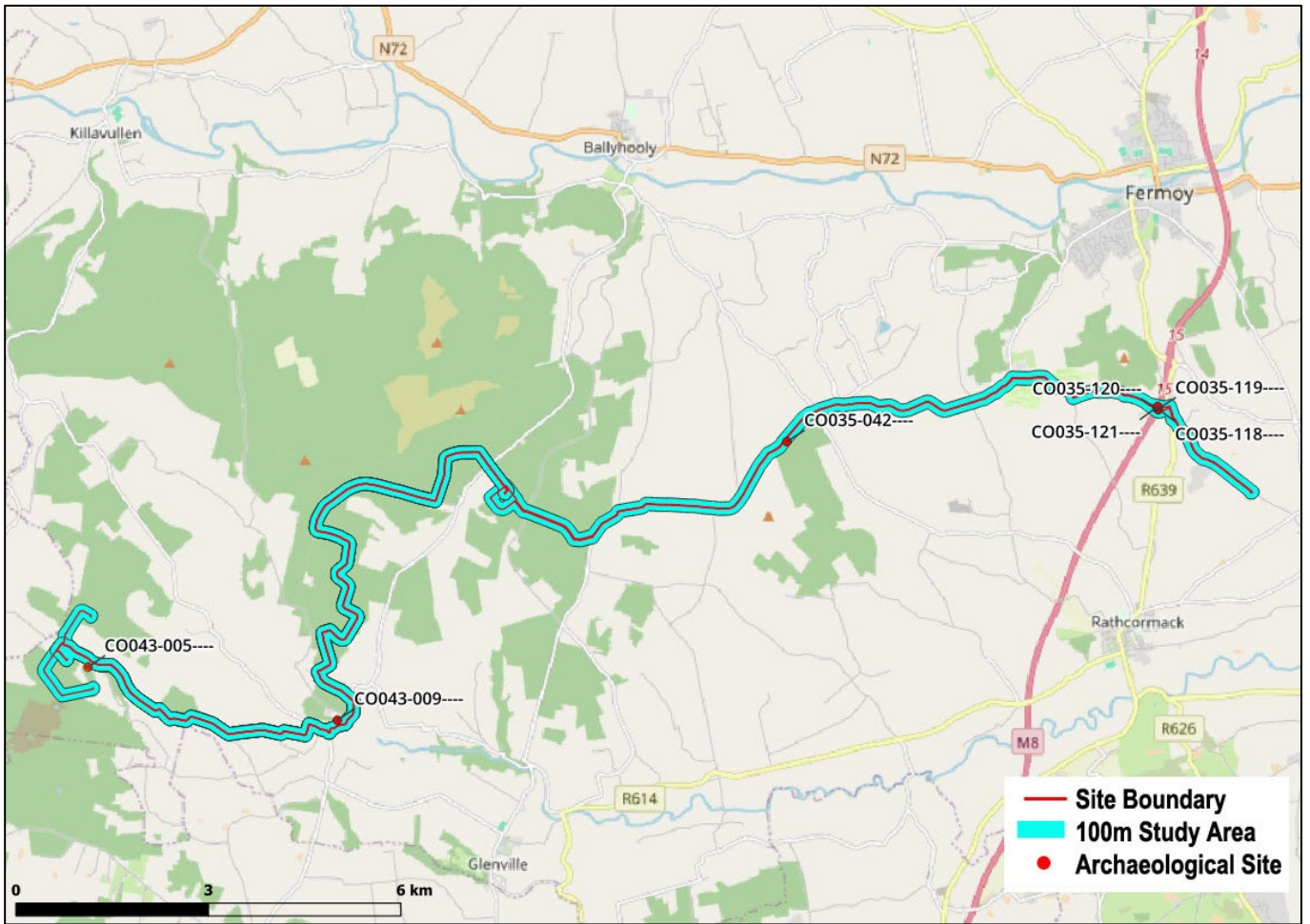


Figure 13.1: Recorded archaeological sites within study area



Figure 13.2: Location of fulacht fia CO043-005---- in relation to the Proposed Development



Figure 13.3: Location of mass rock CO043-009---- in relation to the Proposed Development

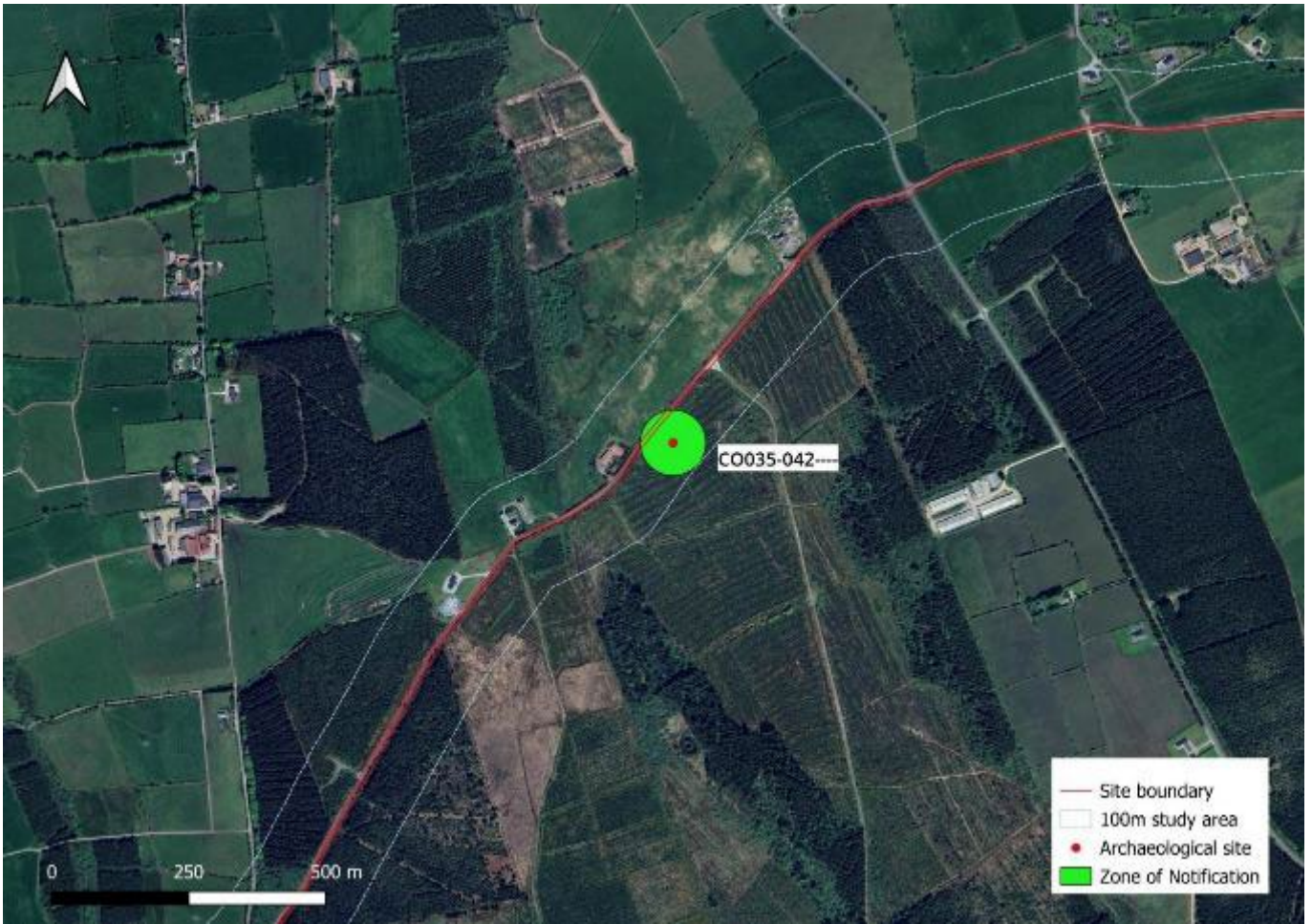


Figure 13.4: Location of enclosure CO035-042---- in relation to the Proposed Development



Figure 13.5: Location of ringfort CO035-048 in relation to the Proposed Development



Figure 13.6: Locations of excavated sites within M80 motorway

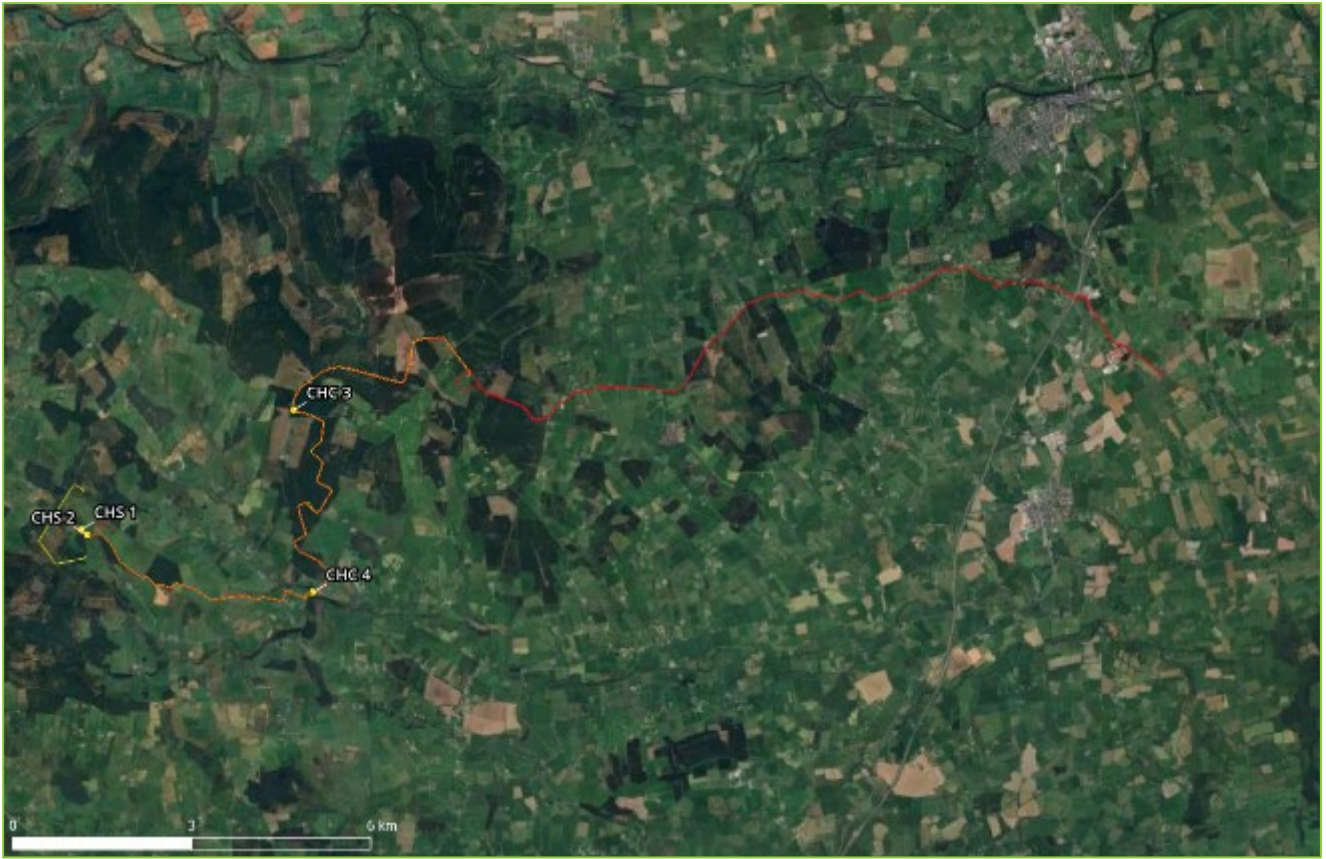


Figure 13.7: Undesignated Cultural Heritage Constraints (CHC) within environs of Proposed Development

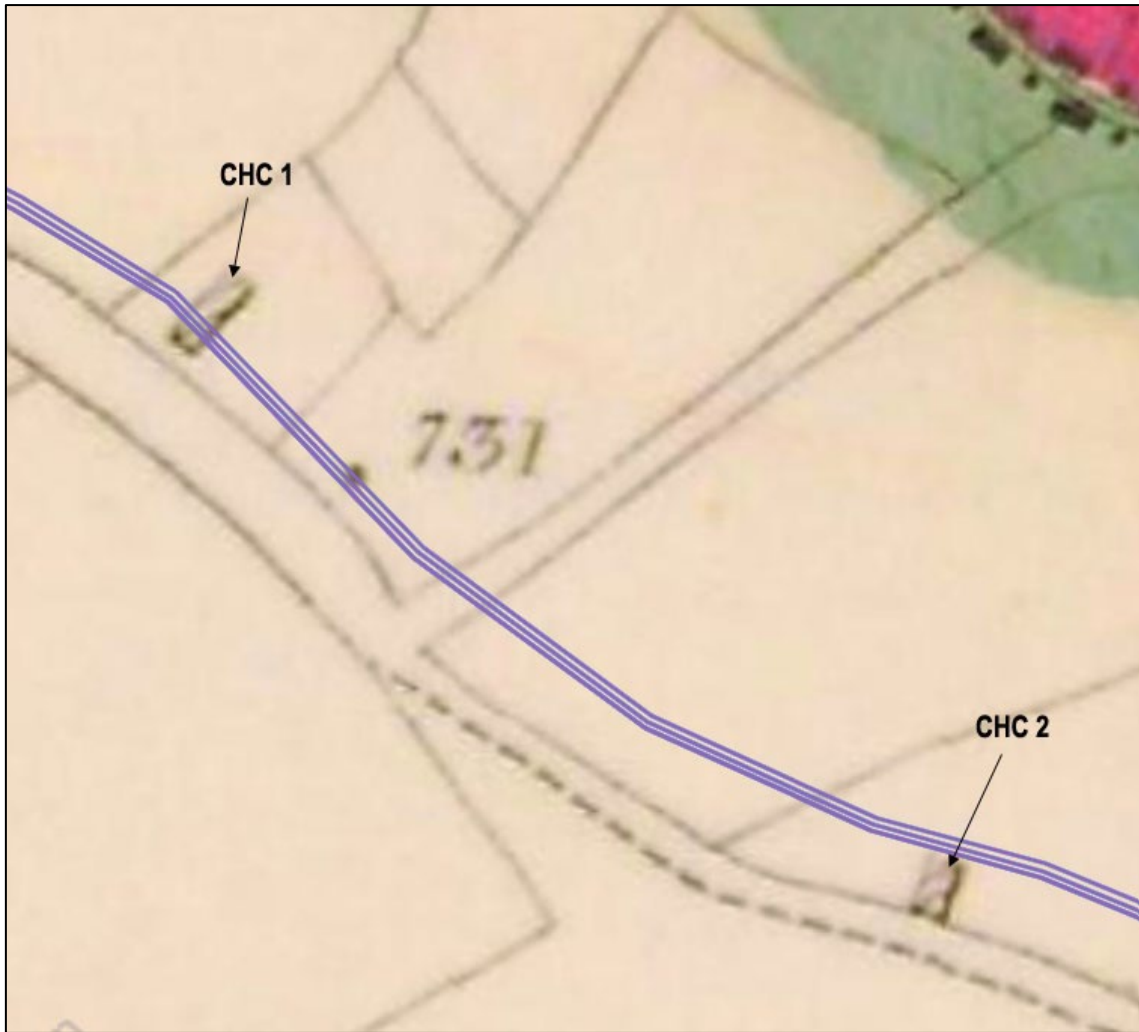


Figure 13.8: 1st edition 6-inch OS map (1846) showing CHC 1 and 2 in Coom (Hudson) townland (Proposed Development indicated in blue on OS map figures¹⁵)

¹⁵ Please note: The route of the Proposed Development shown on Figures 13.8 to 13.13 (inclusive) is based on shapefile overlays on georeferenced historic OS maps sourced from online NMS Historic Environment Viewer. The detail on these historic maps is typically not fully accurate, and these figures are, therefore, intended as indicative only.

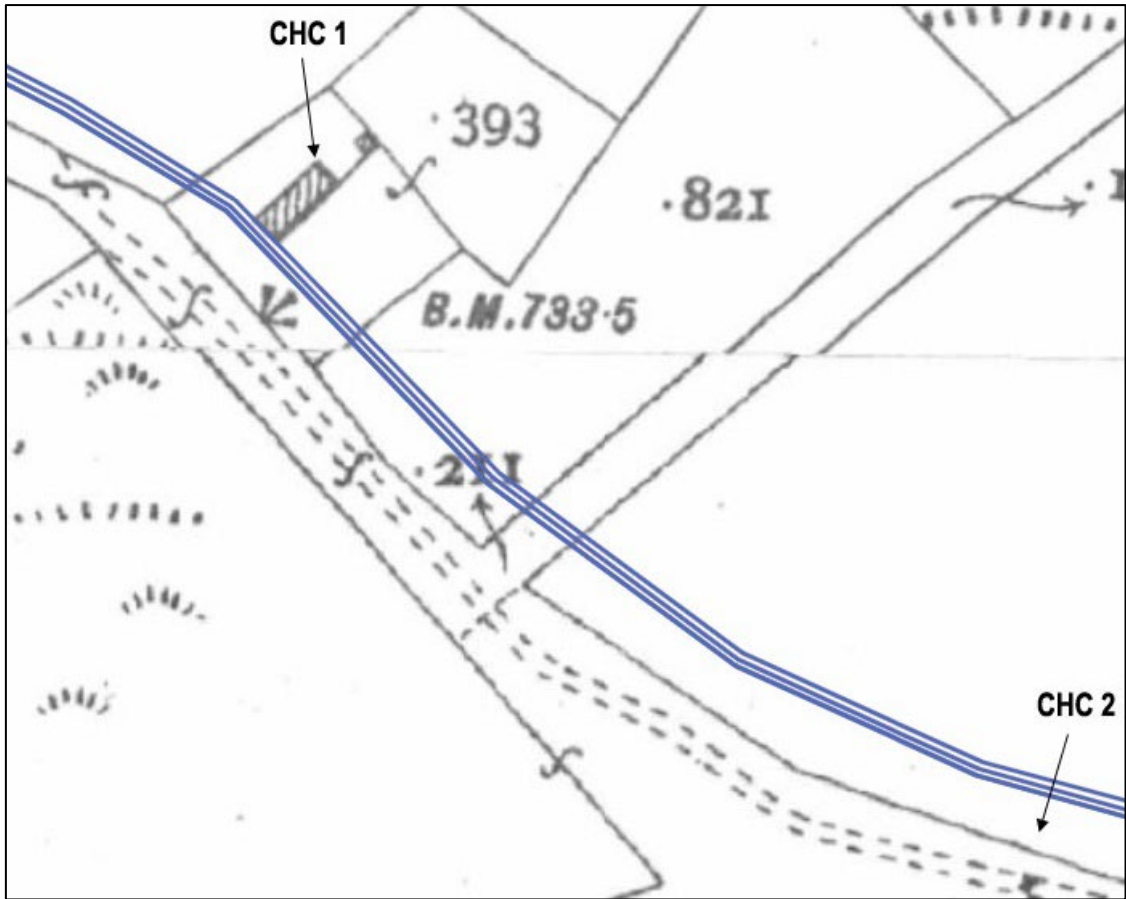


Figure 13.9: Extract from 25 inch OS map (1900) showing CHC 1 and 2 in Coom (Hudson) townland

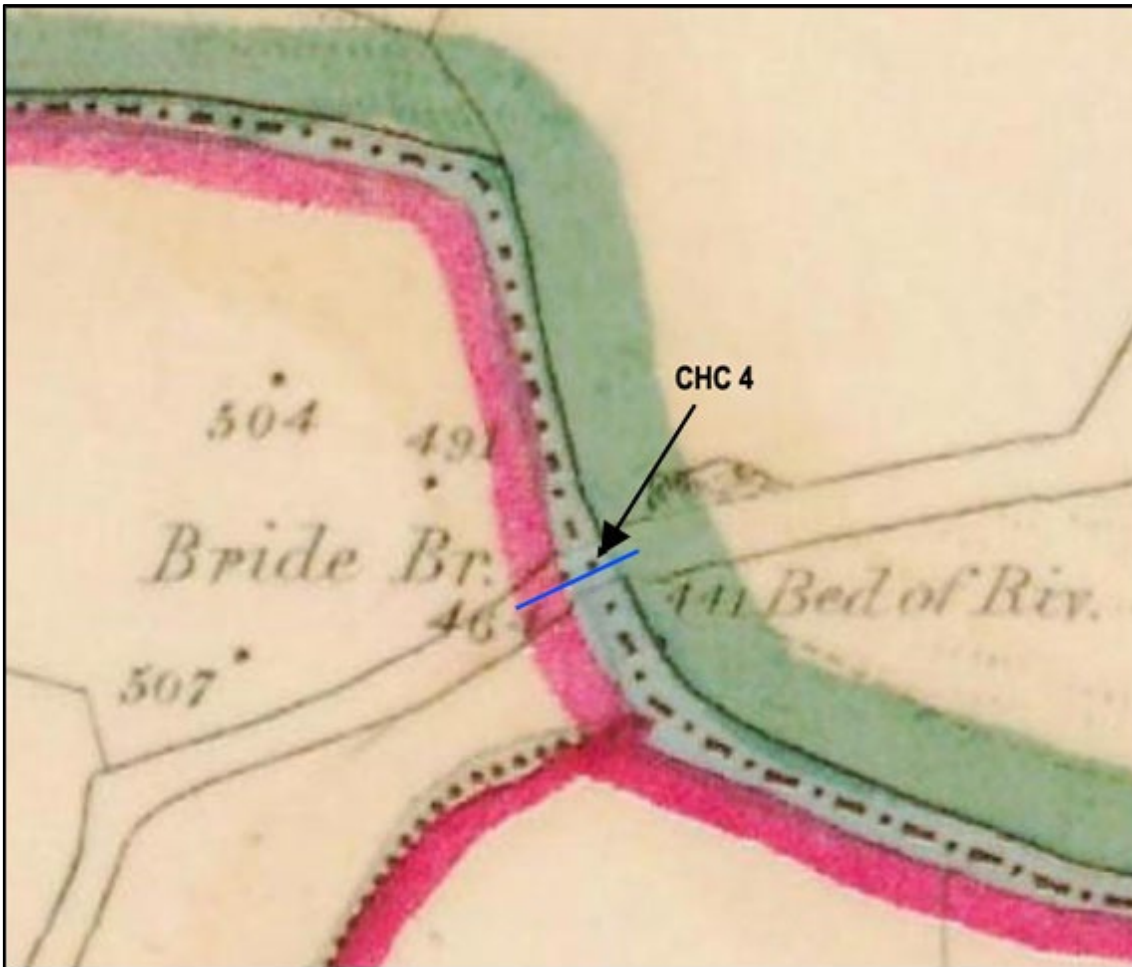


Figure 13.10: Extract from 1st edition 6-inch OS map (1846) showing Bride Bridge (CHC 4). The overlay of the route in this area does not align with the bridge due to inaccuracy of this section of the OS map but is indicated with a blue line

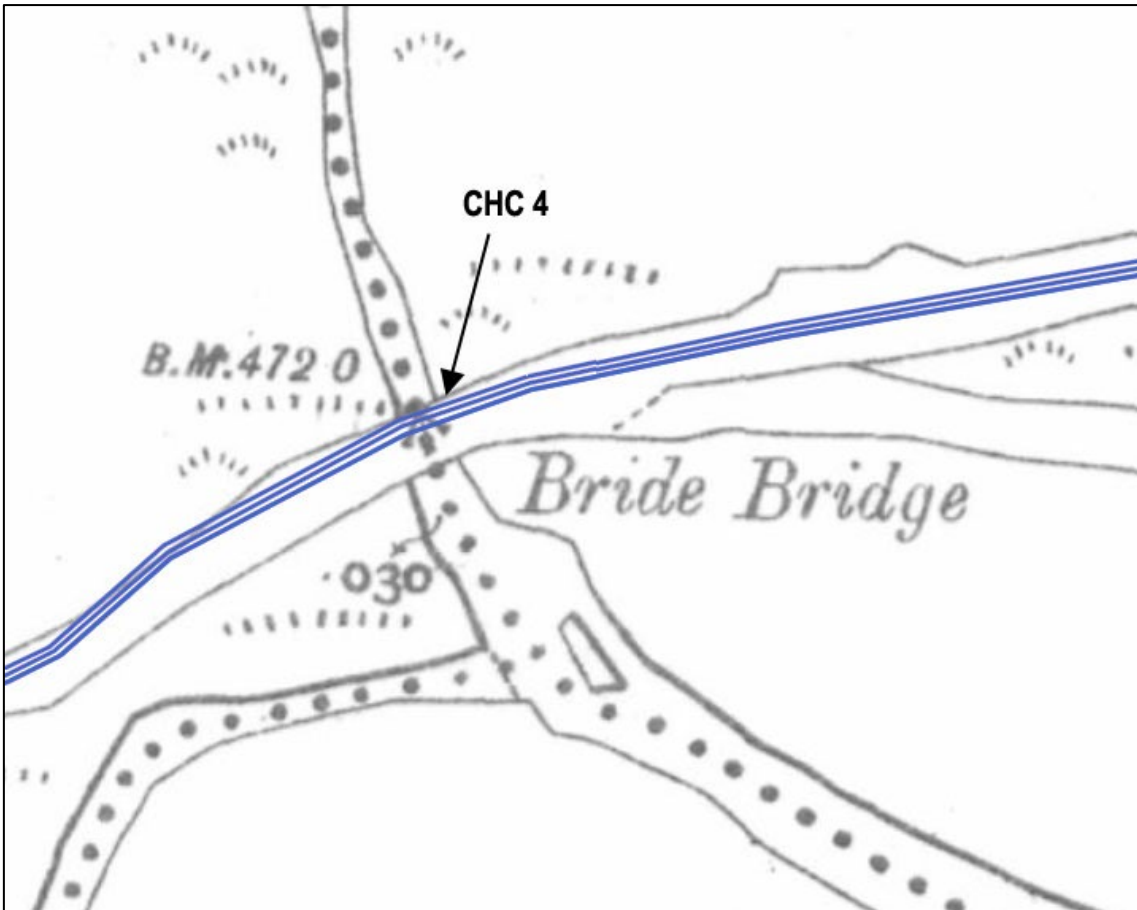


Figure 13.11: Extract from 25 inch OS map (1900) showing Bride Bridge (CHC 4)

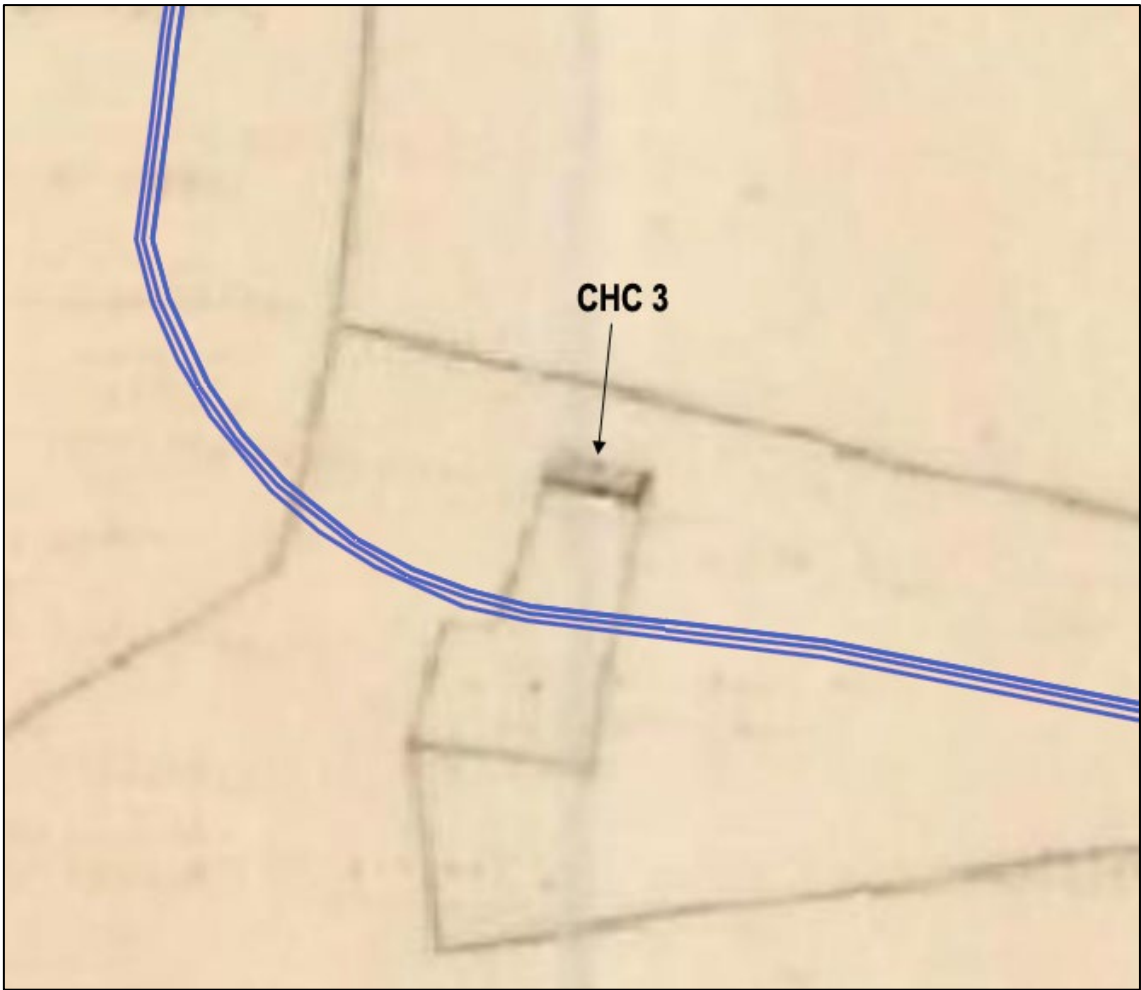


Figure 13.12: Extract from 1st edition 6-inch OS map (1846) showing CHC 3 in Killeagh townland

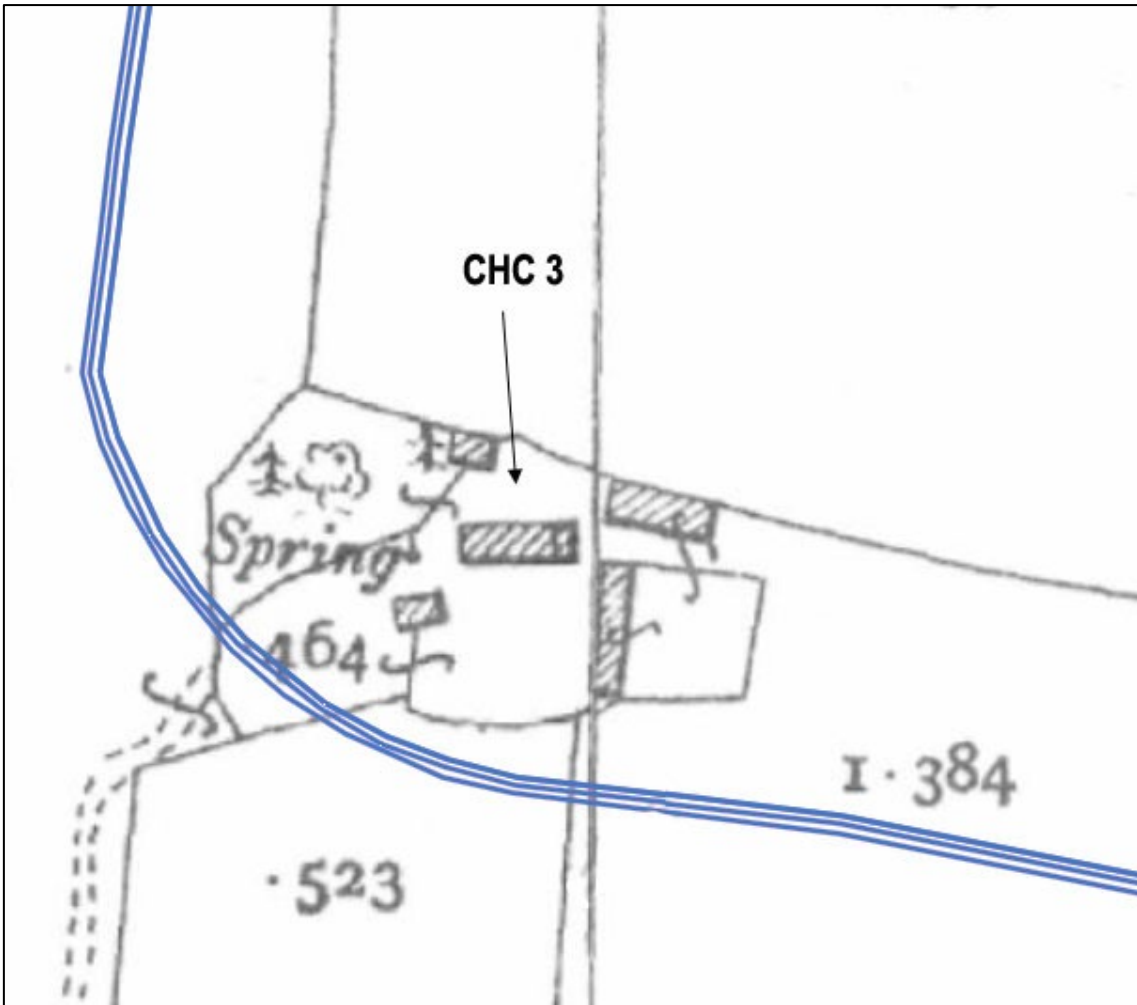


Figure 13.13: Extract from 25 inch OS map (1900) showing CHC 3 in Killeagh townland

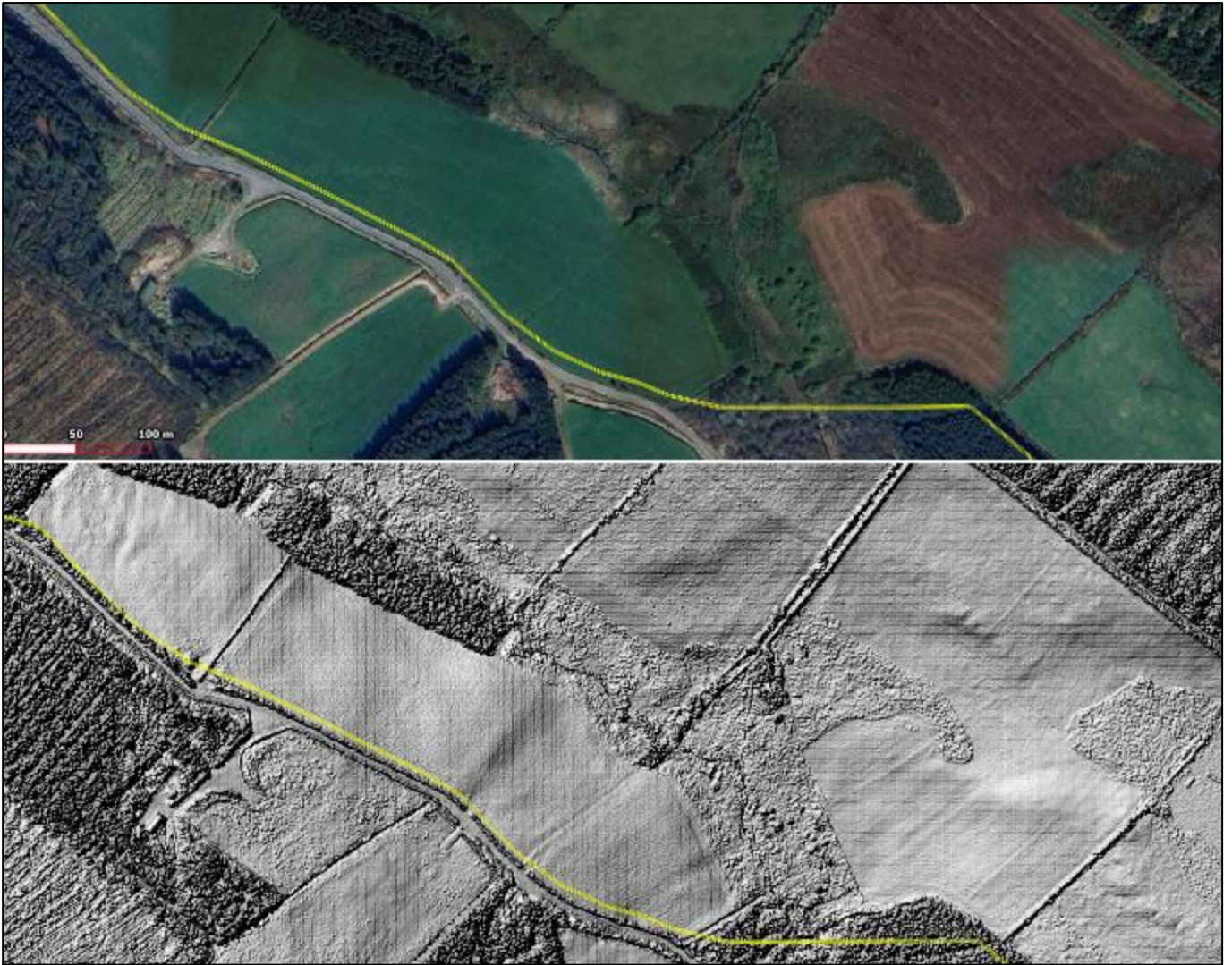


Figure 13.14 LiDAR and Satellite images of green field area in Coom (Hudson) townland (route indicated in yellow)



Figure 13.15: LiDAR and Satellite images of green field area in Knocknacaheragh townland (route indicated in yellow)



DESIGNING AND DELIVERING
A SUSTAINABLE FUTURE

APPENDIX 13.2

Cultural Heritage
Photographic Record

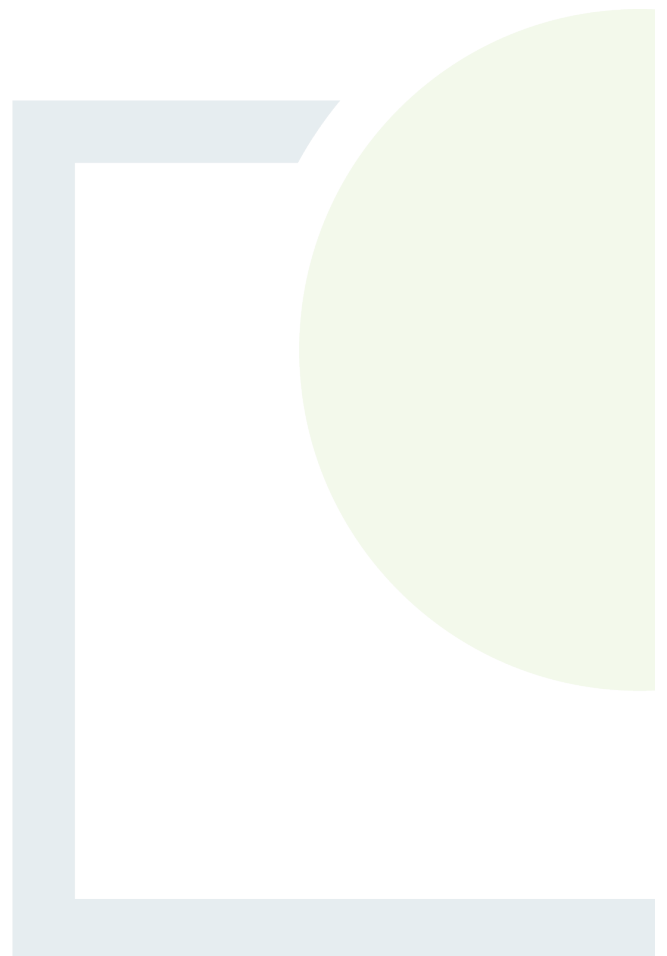




Plate 13.1: View of forestry plantation containing fulacht fiadh CO043-005



Plate 13.2: View of green field area containing levelled farm structures (CHC 1 and 2) in Coom (Hudson) townland



Plate 13.3: View of green field area in Knockaunalour townland



Plate 13.4: View of green field area in Knocknacaheragh townland



Plate 13.5: View of Bride Bridge road surface from east



Plate 13.6: View of gateway to footpath leading to mass-rock CO043-009----



Plate 13.7: View of mass-rock CO043-009----